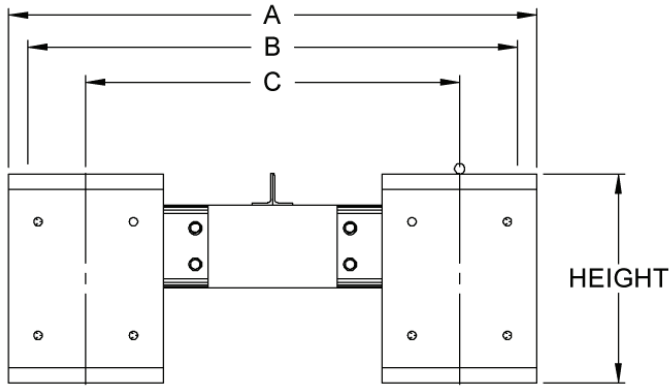




LIFT SYSTEMS, INC.

**ADJUSTABLE WIDTH
RUNWAY TRACK**



A	OUTER WIDTH OF TRACK
B	OUTER WIDTH OF GANTRY
C	WHEEL SPACING CENTER TO CENTER

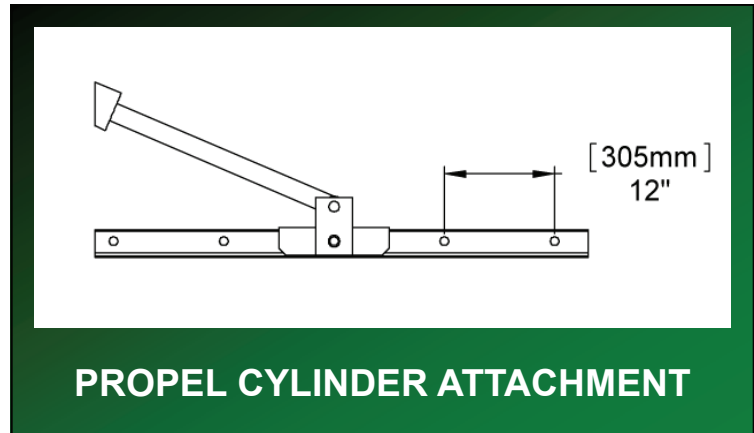
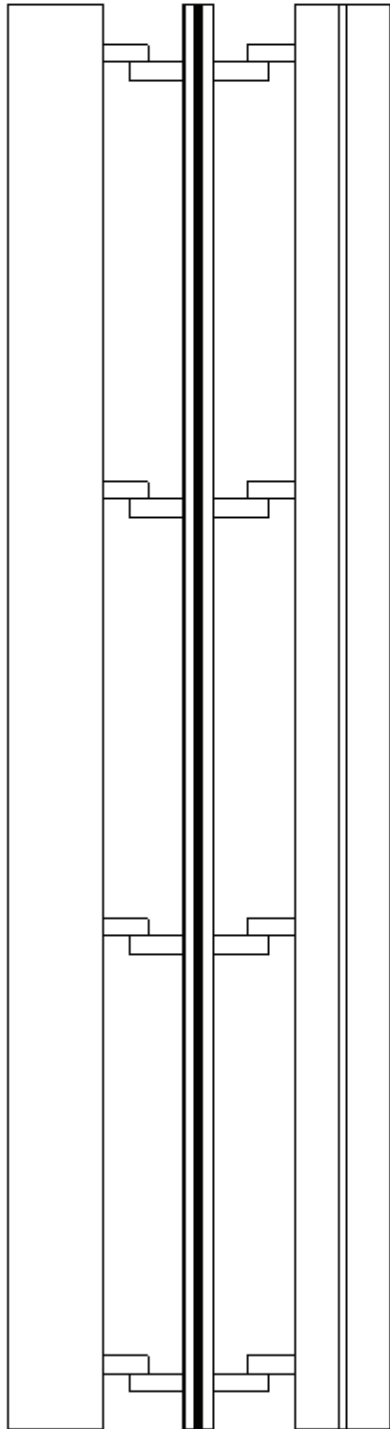
METRIC DIMENSIONS ARE SHOWN IN (MM)

SPECS.	HEIGHT	10'' (254)	15 1/2'' (394)	20 1/4'' (514)	30'' (762)
	WEIGHT	175 lbs. per foot	230 lbs. per foot	500 lbs. per foot	525 lbs. per foot
	STANDARD LENGTHS	10' 15' 20'	10' 15' 20'	10' Up to 40'	10' Up to 40'
	END STYLE	BEVELED 10 DEGREES	STRAIGHT	STRAIGHT	STRAIGHT
WIDE POSITION DIMENSIONS	A	46'' (1168)	48'' (1219)	51'' (1295)	63'' (1600)
	B	48'' (1219)	48'' (1219)	48'' (1219)	60'' (1524)
	C	36'' (914)	36'' (914)	36'' (914)	48'' (1219)
NARROW POSITION DIMENSIONS	A	34'' (864)	36'' (914)	39'' (991)	51'' (1295)
	B	36'' (914)	36'' (914)	36'' (914)	48'' (1219)
	C	24'' (610)	24'' (610)	24'' (610)	36'' (914)



LIFT SYSTEMS, INC.

**ADJUSTABLE WIDTH
RUNWAY TRACK**



CENTER SECTION:

Back to back angles in center section adapted for propel cylinders

CONNECTION:

Each track joint requires bolts, nuts, and washers to connect sections

Qty. 8 sets (bolt, nut, and washers) required per track joint connection (customer supplied)

GUIDE ROD:

1 inch (25mm) guide rod welded on one beam of each runway section allows for proper wheel alignment

CONSTRUCTION:

Fully welded box construction

LIFT SYSTEMS, INC.

OFFICE:
1505 - 7th Street
East Moline, IL 61244

MAILING ADDRESS:
P.O. Box 906
Moline, IL 61266

TEL: +1-309-764-9842
FAX: +1-309-764-9848
EMAIL: liftit@lift-systems.com
WEB: www.lift-systems.com