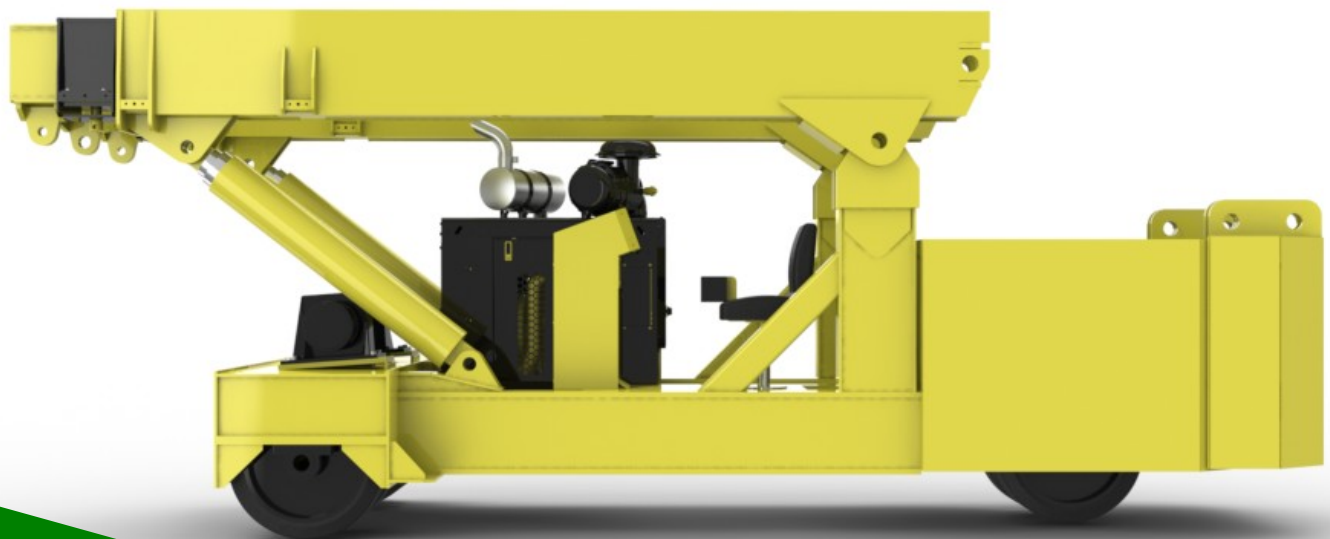




40 TON TWINLIFT

by
LIFT SYSTEMS, INC.



***Global Leaders in Specialized
Lifting Equipment!***



TWINLIFT

40 TON

STANDARD EQUIPMENT

ENGINE:

GM Industrial 4.3L Propane Engine
105HP
U.S. EPA Tier 3
CARB Tier 3
EU Stage III

CONTROL SYSTEM:

CARL (Computer Assisted Remote Lifting) Control System.
Monitors Boom Angle, Boom Extension, Counterweight Extension, Pressure, Counterweight Load Pin. Automatic Shutdown for overload conditions. Large easy to read display screen with push button navigation and dial adjustment.

CONTROLS:

Separate controls for each function.
Combination of foot pedal, joystick, and push button controls allows for multiple functions to be performed at the same time.

DRIVE:

Brevini drive motors (qty. 3)
(2) in front, (1) in rear steering box.

WHEELS:

Front: qty. (4)
Diameter: 28"
Width: 10"

Rear: qty. (2)
Diameter: 28"
Width: 10"

Replaceable polyurethane composition

STEERING:

90 degree steering of rear wheels.

OSCILLATING REAR STEERING BOX:

Keeps all steering wheels in contact with ground.

GRADABILITY:

Unloaded maximum grade is 17%
Loaded maximum grade is 3.5%

GROUND BEARING PRESSURE:

Loaded Front Tires: 780 psi maximum
Unloaded Rear Tires: 660 psi maximum

TELESCOPING COUNTERWEIGHT:

Standard counterweight section telescopes 5' using (2) hydraulic cylinders. Push button control.

HYDRAULIC RESERVOIR:

100 gallons (378 liters)

BOOM LIFT CYLINDERS:

Twin cylinders capable of lifting and lowering with a full load. Safety holding valves installed on both cylinders. Spherical bearings ensure constant alignment with the boom.

BOOM TELESCOPE CYLINDERS:

Twin cylinders capable of telescoping the boom in and out with a full load. Safety holding valves are installed on both cylinders.

LIFTING EYES:

Qty. (1) centrally located on boom with 40 ton capacity

Qty. (2) located on corners of boom with 20 ton capacity each

WINCH MOUNT:

Standard mount for optional winch

WEIGHT:

36,000 lbs.
Standard "A" counterweight included

COUNTERWEIGHTS:

"A" - non-removable counterweight installed in unit
"B" - qty. (2) - 4,850 lbs each. - 9,700 lbs total
"C" - qty. (1) - 8,500 lbs

TIE DOWN / LIFTING EYES:

Tie down / lifting eyes installed for securing unit during transport and for lifting of the unit.

DRIVER PROTECTION GUARD:

Structural overhead guard for operator protection.

OTHER STANDARD FEATURES:

Back up alarm, horn, strobe light, operator seat complete with safety belt and electric switch.

OPTIONAL EQUIPMENT

RADIO REMOTE CONTROL:

Radio remote control allows full machine functionality from a wireless radio remote. Allows operator optimal view of load. Emergency safety shutdown switch is standard.

HYDRAULIC WINCH:

Consult factory for available capacities

FORKLIFT ATTACHMENT:

Consult factory for available capacities

JIB EXTENSION:

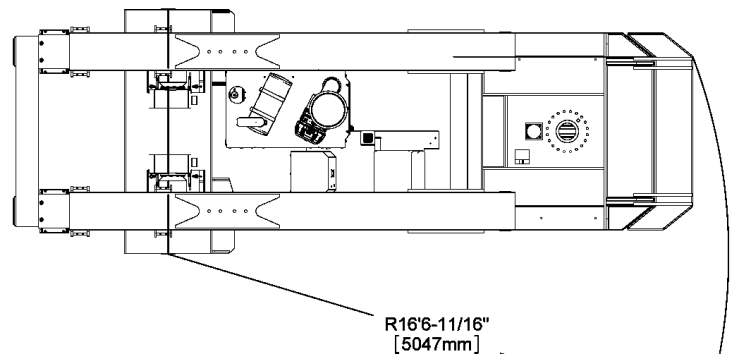
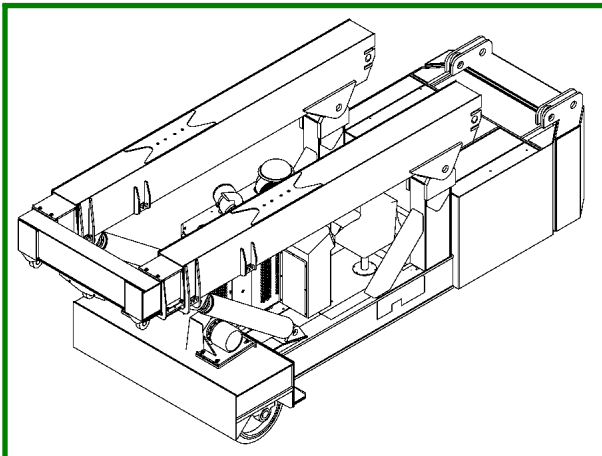
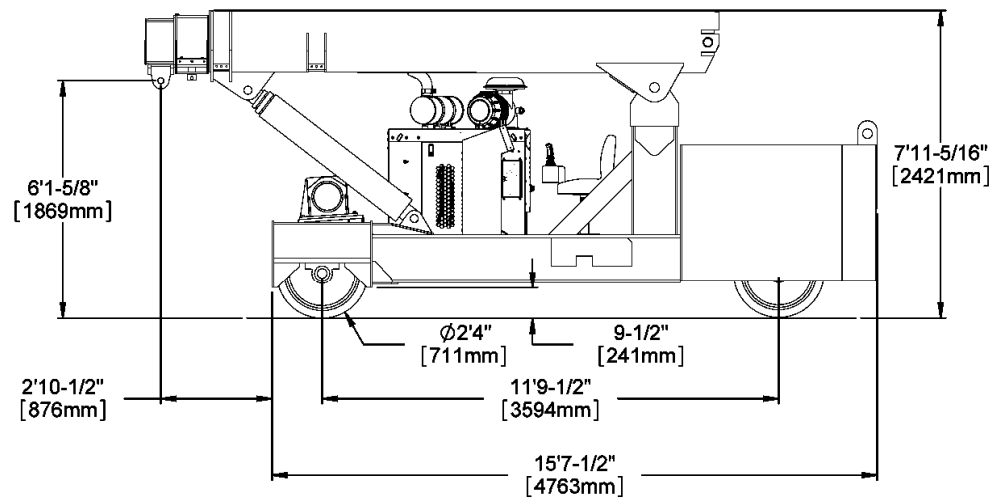
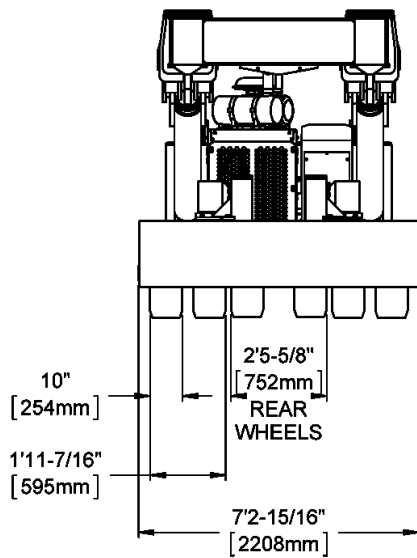
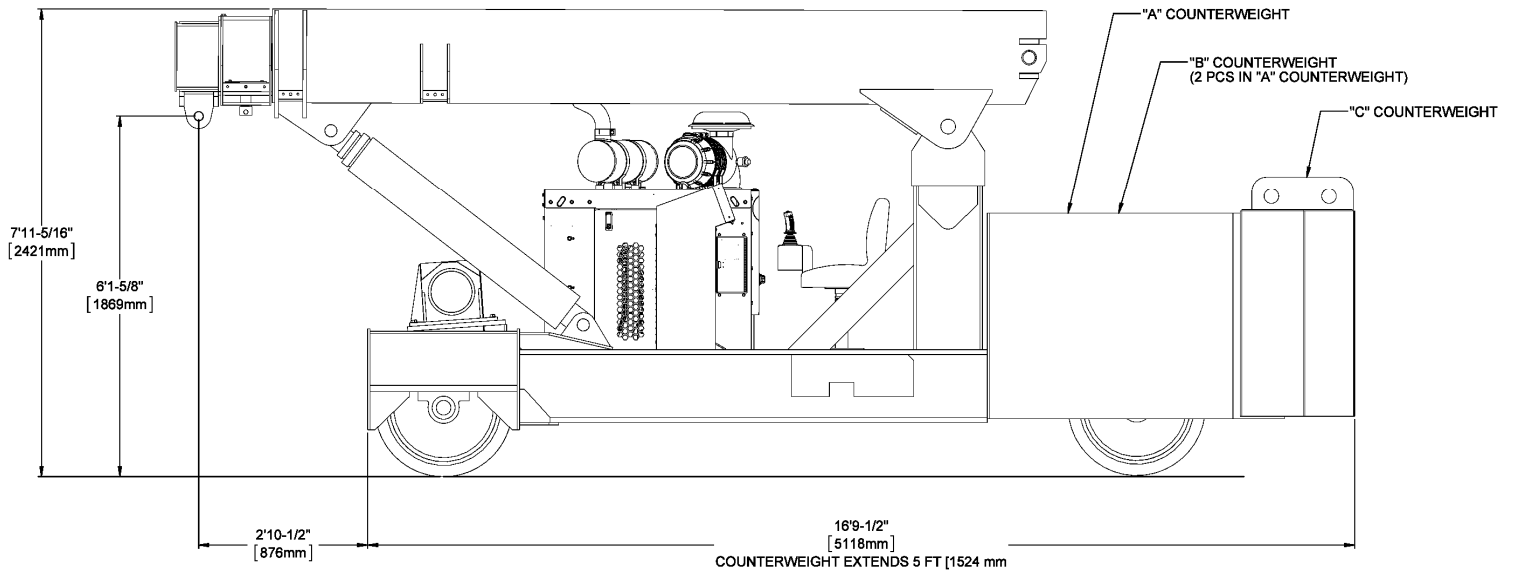
Consult factory for available capacities



TWINLIFT

40 TON

DIMENSIONAL DATA

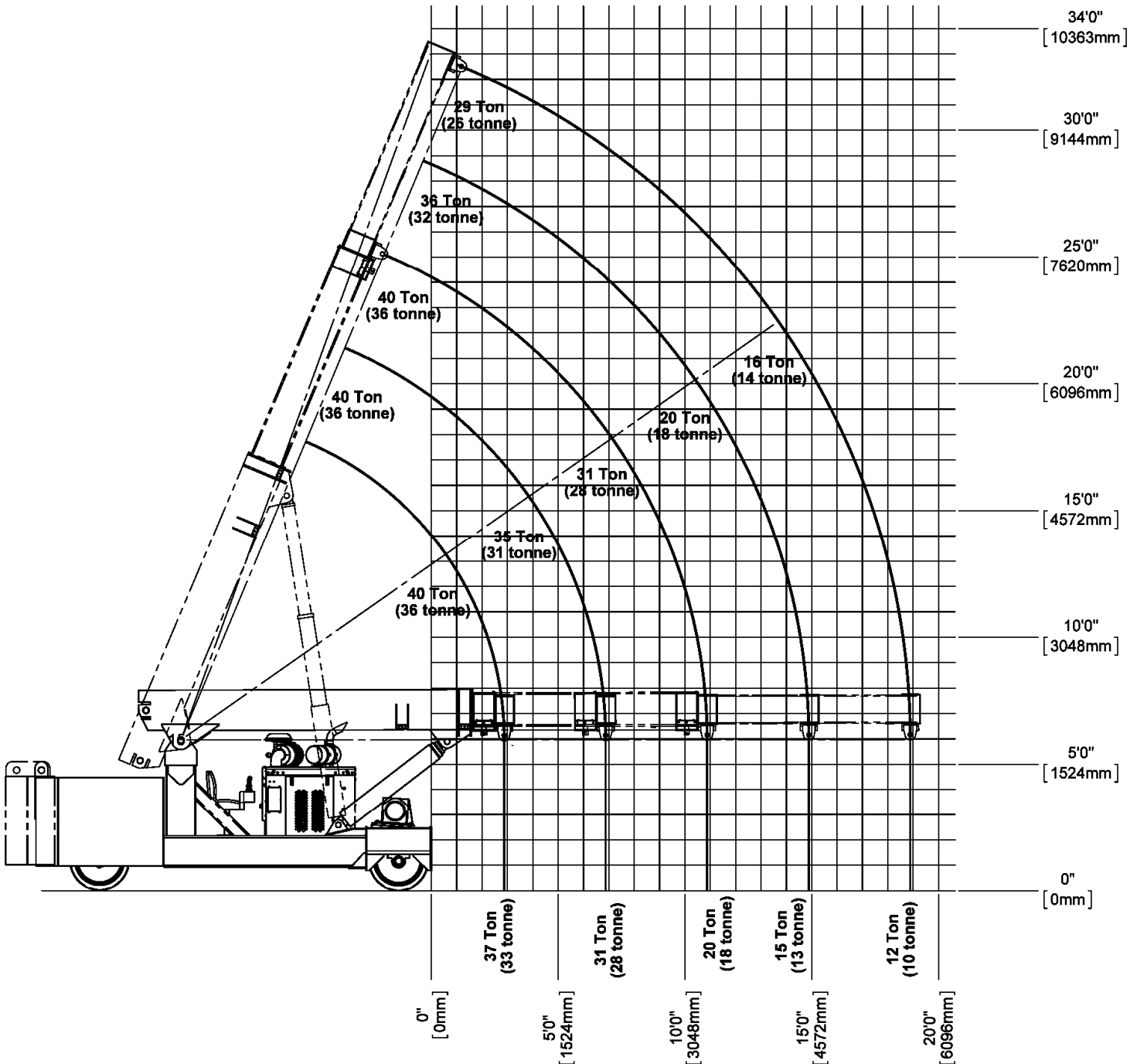




TWINLIFT

40 TON

REFERENCE CAPACITY / RANGE DIAGRAM



NOTE

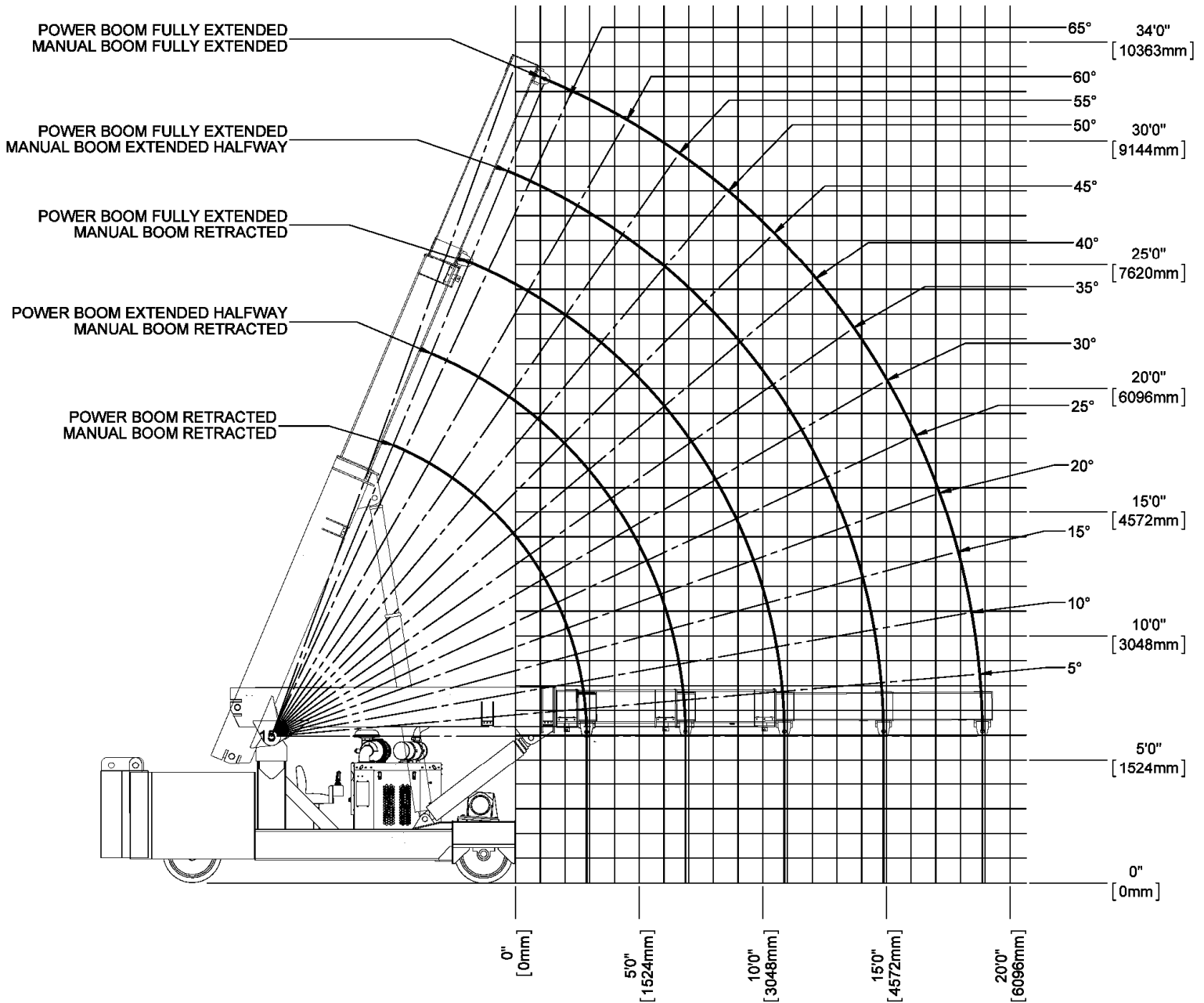
1. The above chart is for reference purposes only.
2. Never use the above chart for lift planning calculations
3. Lift plan calculations are to be determined solely by the load charts and range diagrams that are issued for the specific serial numbered machine that is to be used for the specific planned lift.



TWINLIFT

40 TON

RANGE DIAGRAM



NOTE

1. The above chart is for reference purposes only.
2. Never use the above chart for lift planning calculations
3. Lift plan calculations are to be determined solely by the load charts and range diagrams that are issued for the specific serial numbered machine that is to be used for the specific planned lift.



TWINLIFT

40 TON

LOAD CHARTS FOR "A" COUNTERWEIGHT

LOAD RADIUS (FEET FROM FRONT)	40 TON LOW PROFILE TWINLIFT LOAD CHART																		TLLC116
	FOR USE WITH LIFTING EYE ONLY STANDARD NON-REMOVABLE "A" COUNTERWEIGHT																		7/27/2001
	FULLY EXTENDED									FULLY RETRACTED									
LOADED BOOM ANGLE	BOOM LENGTH (FEET)									BOOM LENGTH (FEET)									
△	13	17	21	25	29	△	13	17	21	25	29	△	13	17	21	25	29		
0	42	80,000	55	80,000	60	80,000	△	42	80,000	55	80,000	60	79,900	△	42	80,000	55	80,000	60
1	35	80,000	51	80,000	60	80,000	△	35	80,000	51	80,000	60	79,900	△	35	80,000	51	80,000	60
2	26	78,400	47	78,200	56	78,000	△	26	64,100	47	62,800	56	62,100	△	26	64,100	47	62,800	56
3	13	63,300	42	62,200	53	61,600	△	13	48,400	42	47,400	53	46,700	△	13	48,400	42	47,400	53
4			36	49,800	49	49,200	△			36	37,700	49	37,200	△			36	37,700	49
5			30	41,300	46	40,800	△			30	31,200	46	30,700	△			30	31,200	46
6			23	35,200	42	34,700	△			23	26,400	42	25,900	△			23	26,400	42
7			11	30,500	38	30,000	△			11	22,800	38	22,400	△			11	22,800	38
8					33	26,400	△					33	19,500	△					33
9					27	23,500	△					27	17,300	△					27
10	SEE NOTE "E"				21	21,100	△					21	15,400	△					21
11					10	19,100	△					10	13,900	△					10
12					30	17,900	△					30	13,100	△					30
13					25	16,400	△					25	11,900	△					25
14					19	15,100	△					19	10,900	△					19
15					10	13,900	△					10	10,000	△					10
16							△							△					
17							△							△					
18							△							△					
19							△							△					

NOTES:
 A) FLY SECTION CAPACITIES ARE LIMITED BY ANGLE. DO NOT USE LOAD RADIUS WHEN USING FLY SECTION.
 B) RATINGS ABOVE THE BOLD LINE ARE BASED ON THE MACHINE'S HYDRAULIC OR STRUCTURAL STRENGTH AND NOT STABILITY.
 C) RATINGS BELOW THE BOLD LINE ARE BASED ON 85% OF TIPPING.
 D) ALL CAPACITIES ARE IN POUNDS.
 E) TELESCOPE CYLINDERS MUST BE FULLY RETRACTED AND AGAINST STOPS.
 F) BOOM LENGTH IS FROM REAR OF BOOM TO CENTER OF LIFT EYE.

CAUTION!
 DO NOT EXTEND OR RETRACT COUNTERWEIGHT WITH ANY LOAD SUSPENDED ON HOOK OR FORKS.

LOAD CHARTS FOR "A" AND "B" COUNTERWEIGHT

LOAD RADIUS (FEET FROM FRONT)	40 TON LOW PROFILE TWINLIFT LOAD CHART																		TLLC117
	FOR USE WITH LIFTING EYE ONLY STANDARD NON-REMOVABLE "A" COUNTERWEIGHT WITH "B" COUNTERWEIGHT ADDED																		7/27/2001
	FULLY EXTENDED									FULLY RETRACTED									
LOADED BOOM ANGLE	BOOM LENGTH (FEET)									BOOM LENGTH (FEET)									
△	13	17	21	25	29	△	13	17	21	25	29	△	13	17	21	25	29		
0	42	80,000	55	80,000	60	80,000	△	42	80,000	55	80,000	60	79,900	△	42	80,000	55	80,000	60
1	35	80,000	51	80,000	60	80,000	△	35	79,900	51	79,600	60	79,400	△	35	79,900	51	79,600	60
2	26	78,100	47	77,800	56	77,700	△	26	74,200	47	73,900	56	73,700	△	26	74,200	47	73,900	56
3	13	74,100	42	73,800	53	73,700	△	13	68,900	42	67,800	53	67,200	△	13	68,900	42	67,800	53
4			36	70,200	49	70,100	△			36	54,300	49	53,800	△			36	54,300	49
5			30	61,800	46	61,300	△			30	45,100	46	44,600	△			30	45,100	46
6			23	52,900	42	52,400	△			23	38,500	42	38,000	△			23	38,500	42
7			11	46,100	38	45,600	△			11	33,400	38	32,900	△			11	33,400	38
8					33	40,300	△					33	29,000	△					33
9					27	36,000	△					27	25,800	△					27
10	SEE NOTE "E"				21	32,500	△					21	23,200	△					21
11					10	29,600	△					10	21,000	△					10
12					30	27,600	△					30	19,700	△					30
13					25	25,400	△					25	18,100	△					25
14					19	23,500	△					19	16,700	△					19
15					10	21,900	△					10	15,400	△					10
16							△							△					
17							△							△					
18							△							△					
19							△							△					

NOTES:
 A) FLY SECTION CAPACITIES ARE LIMITED BY ANGLE. DO NOT USE LOAD RADIUS WHEN USING FLY SECTION.
 B) RATINGS ABOVE THE BOLD LINE ARE BASED ON THE MACHINE'S HYDRAULIC OR STRUCTURAL STRENGTH AND NOT STABILITY.
 C) RATINGS BELOW THE BOLD LINE ARE BASED ON 85% OF TIPPING.
 D) ALL CAPACITIES ARE IN POUNDS.
 E) TELESCOPE CYLINDERS MUST BE FULLY RETRACTED AND AGAINST STOPS.
 F) BOOM LENGTH IS FROM REAR OF BOOM TO CENTER OF LIFT EYE.

CAUTION!
 DO NOT EXTEND OR RETRACT COUNTERWEIGHT WITH ANY LOAD SUSPENDED ON HOOK OR FORKS.

NOTE:
 Specifications are provided in imperial dimensions. All equipment dimensions, designs, specifications, calculations, etc., as described, are subject to change at manufacturer's discretion at any time and without notice. Weights are approximate and may vary. Data herein is for informational purposes only and will not be construed to guarantee suitability of equipment for any particular as performance may vary with conditions encountered. Warranty will apply as written in standard contract form upon purchase of equipment. Capacities are for reference only and must not be used for any serial numbered machine. Serial numbered load charts may be obtained from Lift Systems, Inc.



TWINLIFT

40 TON

LOAD CHARTS FOR "A", "B", AND "C" COUNTERWEIGHT

LOAD RADIUS (FEET FROM FRONT)	40 TON LOW PROFILE TWINLIFT LOAD CHART																TLLC118	
	FOR USE WITH LIFTING EYE ONLY																7/27/2001	
	STANDARD NON-REMOVABLE "A" COUNTERWEIGHT WITH "B", "C" COUNTERWEIGHT ADDED																	
	FULLY EXTENDED								FULLY RETRACTED									
	LOADED BOOM ANGLE	BOOM LENGTH (FEET)							LOADED BOOM ANGLE	BOOM LENGTH (FEET)								
	△	13	△	17	△	21	△	25	△	13	△	17	△	21	△	25	△	29
0	42	80,000	55	80,000	60	80,000	△		42	80,000	55	80,000	60	80,000	△			
1	35	80,000	51	80,000	56	80,000		FLY SECTION SEE NOTES	35	80,000	51	80,000	56	80,000				
2	26	79,400	47	79,100	56	79,000			26	75,900	47	75,600	56	75,400				
3	13	75,300	42	75,100	53	74,900	60	72,300	13	70,800	42	70,500	53	70,200	60	70,600	△	
4			36	71,400	49	71,200	57	68,300			36	66,000	49	65,700	57	66,100		
5			30	68,000	46	67,900	54	64,900	60	59,000	30	61,500	46	61,000	54	61,700	60	59,000
6			23	65,000	42	64,800	51	61,800	57	56,600	23	52,600	42	52,100	51	52,800	57	53,300
7			11	62,200	38	62,000	48	59,100	55	54,300	11	45,800	38	45,300	48	46,000	55	46,500
8					33	55,300	45	55,900	53	52,200			33	40,100	45	40,700	53	41,100
9					27	49,500	42	50,100	50	50,400			27	35,800	42	36,400	50	36,800
10	SEE NOTE "E"				21	44,800	38	45,400	47	45,800			21	32,300	38	32,900	47	33,300
11					10	40,900	34	41,400	45	41,800			10	29,400	34	29,900	45	30,300
12							30	38,000	42	38,400					30	27,400	42	27,800
13	NOTES:						25	35,100	39	35,500					25	25,200	39	25,600
14	A) FLY SECTION CAPACITIES ARE LIMITED BY ANGLE. DO NOT USE LOAD RADIUS WHEN USING FLY SECTION.						19	32,600	35	33,000					19	23,400	35	23,700
15	B) RATINGS ABOVE THE BOLD LINE ARE BASED ON THE MACHINE'S HYDRAULIC OR STRUCTURAL STRENGTH AND NOT STABILITY.						10	30,400	32	30,800					10	21,700	32	22,100
16	C) RATINGS BELOW THE BOLD LINE ARE BASED ON 85% OF TIPPING.								28	28,800							28	20,600
17	D) ALL CAPACITIES ARE IN POUNDS.								23	27,000							23	19,300
18	E) TELESCOPE CYLINDERS MUST BE FULLY RETRACTED AND AGAINST STOPS.								17	25,500							17	18,200
19	F) BOOM LENGTH IS FROM REAR OF BOOM TO CENTER OF LIFT EYE.								9	24,100							9	17,100

NOTE: Specifications are provided in imperial dimensions. All equipment dimensions, designs, specifications, calculations, etc., as described, are subject to change at manufacturer's discretion at any time and without notice. Weights are approximate and may vary. Data herein is for informational purposes only and will not be construed to guarantee suitability of equipment for any particular as performance may vary with conditions encountered. Warranty will apply as written in standard contract form upon purchase of equipment. Capacities are for reference only and must not be used for any serial numbered machine. Serial numbered load charts may be obtained from Lift Systems, Inc.

LIFT SYSTEMS, INC.

OFFICE:
1505 - 7th Street
East Moline, IL 61244

MAILING ADDRESS:
P.O. Box 906
Moline, IL 61266

TEL: +1-309-764-9842
FAX: +1-309-764-9848
EMAIL: liftit@lift-systems.com
WEB: www.lift-systems.com